



Rabbit anti Caspase 12 Polyclonal Antibody

Alternative Name(s): CASP-12; CASP12P1

Order Information

- **Description:** Caspase 12
- **Catalogue:** 500-9544
- **Lot:** See label
- **Size:** 100ug/200ul
- **Host:** Rabbit
- **Clone:** nan
- **Application:** IHC(P), WB
- **Reactivity:** Hu, Ms, Rt

ANTIGEN PREPARATION

A synthetic peptide derived from Internal sequence of mouse Caspase 12 protein. This sequence is identical to human, rat and mouse species.

BACKGROUND

Caspases belong to the cysteine-aspartic acid protease (Caspase) family which plays a major role in the transduction of the apoptotic signal and execution of apoptosis in mammalian cells. Caspases exist as inactive proenzymes which undergo proteolytic processing at conserved aspartic residues to produce 2 subunits, large and small, that dimerize to form the active enzyme. This protein could be processed by caspases 7, 8 and 10, and is thought to function as a downstream. The endoplasmic reticulum (ER) stress is associated to caspase-12. Caspase-12 is activated by ER stress, including disruption of ER calcium homeostasis. Caspase-12 is co-localized to the ER with several proteins that are involved in Alzheimer's disease including g-secretase presenilin and b-amyloid precursor protein (APP). Caspase-12 mediates ER stress-induced apoptosis as well as cytotoxicity induced by amyloid-b. Caspase-12 is ubiquitously expressed in mouse tissues.

PURIFICATION

The Rabbit IgG is purified by Epitope Affinity Purification

FORMULATION

This affinity purified antibody is supplied in sterile Phosphatebuffered saline (pH7.2) containing antibody stabilizer

SPECIFICITY

This antibody reacts with caspase 12 in human, mice and rat

STORAGE

The antibodies are stable for 24 months from date of receipt when stored at -20oC to -70oC. The antibodies can be stored at 2oC-8oC for three month without detectable loss of activity. Avoid repeated freezing-thawing cycles.

APPLICATIONS/SUGGESTED WORKING DILUTIONS*

- Western Blot: 0.1-1 µg/ml
- ELISA: 0.01-0.1 µg/ml
- Immunoprecipitation: 2-5 µg/ml
- IHC: 2-10 µg/ml
- Flow cytometry: Not tested
- Molecular Weight: 48.0
- Positive Control: Kidney Tissue
- Cellular Location: Cell Membrane

*Optimal dilutions should be determined by researchers for the specific applications.

FOR RESEARCH USE ONLY.

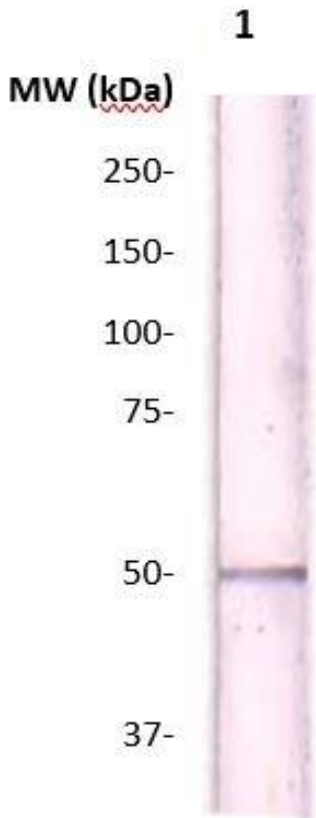
AbboMax, Inc 2528 Qume Drive, Suite 8, San Jose, California 95131, USA
1 408-573-1898 (Tel). 1 408-573-1858 (Fax). www.abbomax.com info@abbomax.com



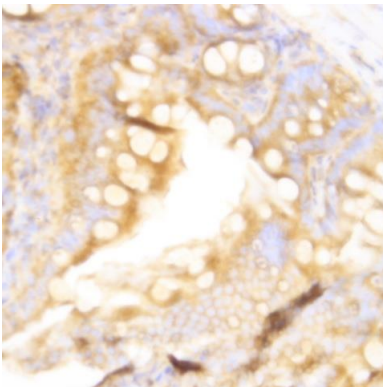
FOR RESEARCH USE ONLY.

AbboMax, Inc 2528 Qume Drive, Suite 8, San Jose, California 95131, USA
1 408-573-1898 (Tel). 1 408-573-1858 (Fax). www.abbomax.com info@abbomax.com

DATA ATTACHMENTS



Western Blot: The brain tissue lysate was resolved onto 12% SDS-PAGE and transferred onto NC Membrane, then probed by Rabbit anti Caspase 12 antibody, (Cat# 500-9544) at 1:500. An immune-reactive band ~ 48 kDa is observed.



Immunohistochemistry: Human breast carcinoma (FFPE) stained with Rabbit anti-Caspase 12 (Cat#500-9544) at 1:200 for 10 min @ RT. Staining of formalin-fixed tissue requires boiling tissue sections in 10 mM Citrate Buffer, pH 6.0 for 10 min followed by cooling at RT for 20 min.

REFERENCES

FOR RESEARCH USE ONLY.